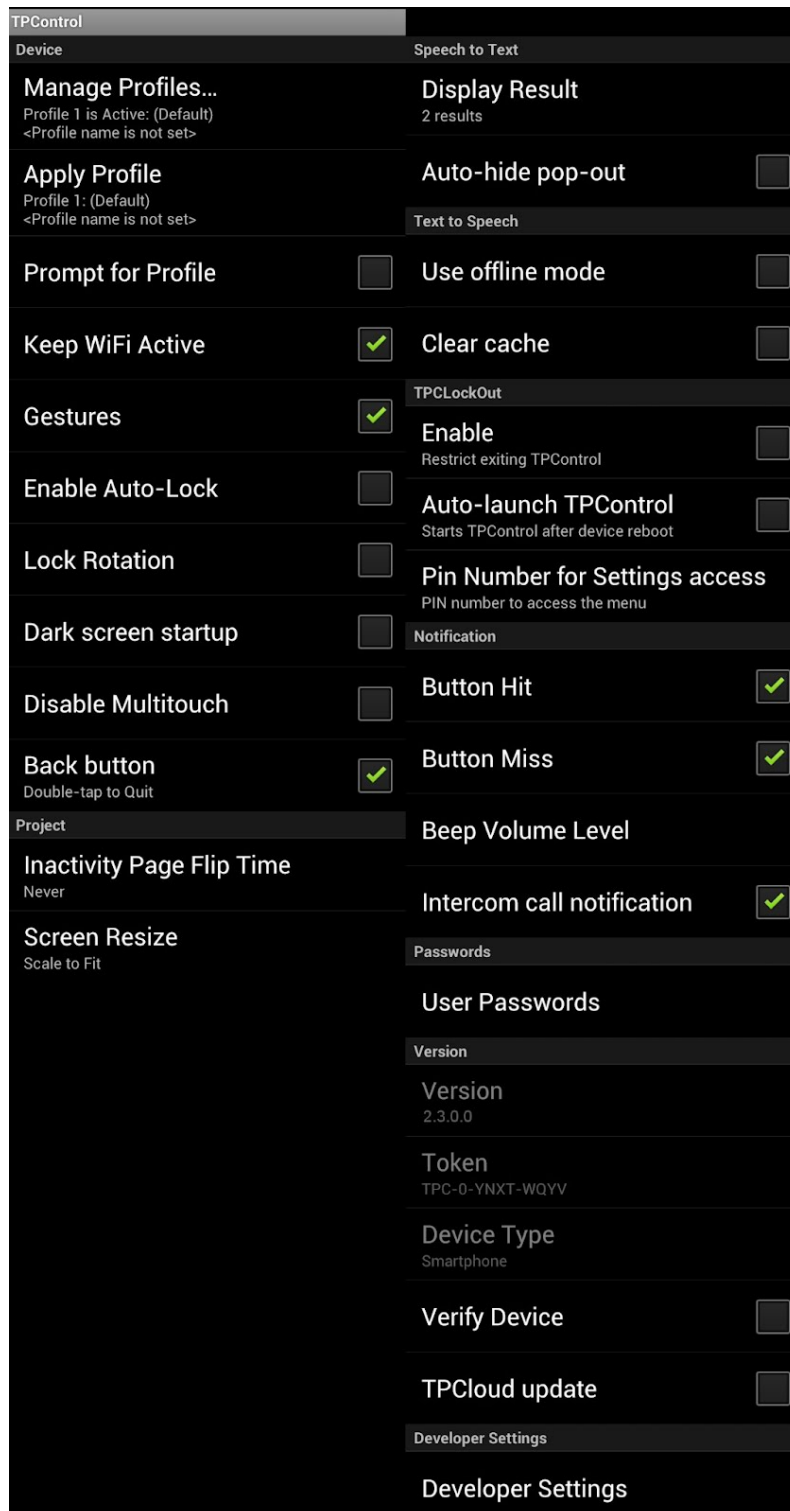


The following is a guide to configuring Settings available within TPCControl for Android devices.

Begin by opening TPCControl on the device, then select the **MENU** button on your device, followed by the **Settings** option. Pictured are the options available from the primary Settings menu, with detailed descriptions included in the following pages.



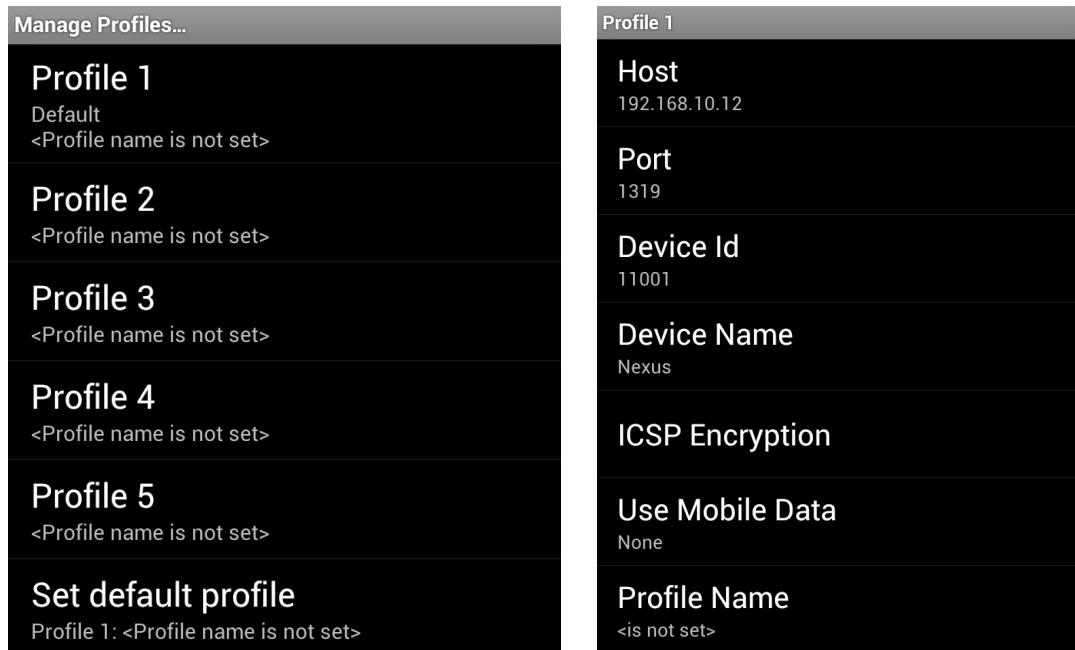
Device:

Manage Profiles

Profiles have been introduced to TPCControl from v2.3.0.0, and replace previous *Local Host/Remote Host* configuration options.

Profiles provide the ability to define independent connection-based information for the device, which can easily and quickly be recalled. API commands support manipulation of all aspects of each profile definition, essentially providing limitless combinations for profile configurations.

Selecting the 'Manage Profiles' option will present 5 profile selection options as well as an option to define a Default profile.



Profile 1, 2, 3, 4 or 5

Choosing a profile to edit will present the following options:

Host

The Host field is used to enter the primary address of the NI Master that will be used for communications.

Supports: IP address and Fully Qualified Domain Name (FQDN e.g. 'myNI.touchpanelcontrol.com').

Port

The IP Port number used by the ICSP protocol for communication between the NI Master and TPCControl. Default is port 1319.

Device ID

This is the AMX Device ID that TPCControl will use to identify itself with the NI Master. AMX programming events utilise this Device ID for communication to and from the NI Master and TP Control.

Device Name

This is used as an additional method of identifying the device with the NI Master, and is also utilised within TPTransfer to assist in device identification. e.g. "Android-Kitchen".

ICSP Encryption

ICSP data communications can be encrypted for an additional level of security. Options provided are:

- *Enable ICSP Encryption*
TPControl will utilise encrypted ICSP communication when enabled.
NOTE: If a device has ICSP Encryption enabled, and the NI Master is not configured for ICSP Encryption, the device will still connect to the NI Master. i.e. ICSP settings are only considered relevant when the NI Master is configured for ICSP Encryption.
- *Username*
Select to enter the username with ICSP Encryption privileges configured on the NI Master.
- *Password*
Select to enter the password associated with the *username*.

NOTE: ICSP Encryption must be enabled on the NI Master for encrypted ICSP communications to be supported.

Use Mobile Data

The following options are available to for establishing a connection to the NI master:

- *None*
Device will only use the WiFi adapter to establish a connection
- *With WiFi*
Device will use the WiFi adapter to establish a connection if a connection is present. If no WiFi is available, MobileData will be used to establish a connection
- *Without WiFi*
Device will use only MobileData to establish a connection
NOTE: MobileData may not be supported while an active WiFi connection is present.

Profile Name

This option provides the ability to name a profile.

Naming a profile is only necessary if you would like TPControl to present the profile as an option within the built in 'Connect using profile...' connection dialog. This is particularly useful when multiple connection profiles are configured. Some examples names would be; Profile 1:'Room A', Profile 2:'Room B', etc.

Set default profile

Choose from any 1 of the 5 available profiles to define the default.

The default profile determines which profile TPControl will use at startup. The default profile is used only when starting TPControl if it was not previously running in multi-tasking mode (Home screen). If TPControl was running in multi-tasking mode, the active profile will remain operational.

NOTE: The current active profile will not be affected when setting the default profile.

Apply Profile

Choose from any of the 5 available profiles, to activate the chosen profile.

NOTE: The profile will be applied once you exit Settings and answer 'OK' to the 'Settings were changed' dialog.

Prompt for Profile

When enabled, TPControl will present the 'Connect using profile...' dialog window. The window will be presented whenever returning from the Home-screen or multi-tasking mode. This is independent of whether an active profile connection exists or not.

The following named or unnamed profiles will be shown:

- the current active profile

- the current default profile
- any named profile

NOTE: The "Not Connected" dialog will automatically present the 'Connect using profile...' dialog window independent of the *Prompt for Profile* setting. Supported in TPCControl v2.3.0.0+.

Keep Wifi Active

When Enabled, TPCControl will continue to keep a connection live with the NI Master when the device goes to sleep or another application takes device focus e.g. the device Home screen.

Gestures

Enable or disable AMX gesture recognition. Default is enabled. Recommend disabling when Accessibility mode is enabled, due to gesture specific operation of Accessibility functions.

Enable Auto-Lock

When Enabled this will allow the Device to run the OS screen lock feature as set in "General Settings" on the device. If Enable Auto-Lock is set to "Off" the screen will stay active until the Power button is pressed.

Battery life can be reduced significantly when this feature is not enabled.

Lock Rotation

- *Disabled:* Allows the project content to rotate based on the orientation of the device.
- *Enabled:* Prevents the device from rotating the project content based on the orientation of the device.

Dark screen startup

When Enabled provides a dark background loading image for TPCControl as opposed to the default white background loading image.

Disable Multitouch

- *Disabled:* Allows multitouch operation.
- *Enabled:* Prevents multitouch operation
e.g. a release must be issued before the next press will be recognised.

Back button

- *Disabled:* One press of the 'Back' button on the device will quit TPCControl.
- *Enabled:* Two consecutive presses of the 'Back' button on the device are required to quit TPCControl.

Project:

Inactivity Page Flip Time

When a value is set, if a button has not been pressed within the specified time, TPControl will flip to the Inactivity page that has been defined within the properties of the AMX TPDesign4 TP4 file.

Screen Resize

Options provided here allow the TP4 project to be presented in the following modes:

- *None*
No resizing of the original TP4 project is applied, and will be shown using the original aspect and resolution.
- *Scale-to-fit (default on first install)*
The original TP4 file will be upsized or downsized, retaining the original aspect-ratio of the project. At least one dimension will be fully utilised when displayed on the device.
- *Stretch-to-fit*
The original TP4 file will be upsized or downsized, independently for the height and width of the project i.e. the aspect ratio of the design *may* be affected/stretched as a result. The project will fill the entire display on the device when presented.

Speech-to-Text:

Speech-to-Text requires the device to have unrestricted Internet access.



Display Result

The result of Speech-to-Text analysis can be displayed via a brief notification on-screen. Options available are:

- *Do Not Display:* Results will not be displayed
- *1 result:* 1 result will be displayed (default)
- *2 results:* Up to 2 results will be displayed
- *3 results:* Up to 3 results will be displayed

NOTE: Errors in processing will always solicit a notification independent of this setting.

Auto-hide pop-out

- *Disabled:* TPControl will hide the Speech-to-Text recording dialog only after a successful result is processed.
- *Enabled:* TPControl will hide the Speech-to-Text recording dialog once processing of recorded audio commences, irrespective of the result.

Text-to-Speech:

Use offline mode

- *Disabled:* TPControl will utilise online resources to determine text-to-speech translation (default).
- *Enabled:* TPControl will utilise device defined language packs to determine text-to-speech translation.

NOTE: In order to operate properly while in offline mode, the device must have an appropriate language pack installed to complete the operation.

NOTE: Results are cached with each completed translation when operating in online mode.

Clear cache

Clears the text-to-speech cache which is created during online operation.

TPCLockOut:

TPCLockOut functionality may vary between different Android devices. Factors that can affect the intended operation can relate to the operating system version installed, and manufacturer or service-provider software operating on the device.



Enable (TPCLockOut)

Enabling *LockOut* will restrict usage of the "Home", "Back", "Menu/Setting", and "Search" soft-or-external button functions on the Android device.

TPControl retains application focus, and if TPControl detects that application focus has been lost, will attempt to automatically regain focus.

Restricted access to TPControl *Settings* is provided through a pin-code (see *LockOutPin*) when TPCLockOut is enabled.

Auto-launch TPControl

Option to automatically launch TPControl when the device boots up.

Pin number for Settings access

When the TPCLockOut functionality is enabled, access to TPControl Settings is restricted by entry of a pin-code.

The pin-code can be updated using this option.

Notification:

Button Hit

When enabled, Button Hit produces a "Beep" sound when a valid button area is pressed within the touch panel design file.

Button Miss

When enabled, Button Miss produces a "Double Beep" sound when any area outside of a valid button area is pressed within the touch panel design file.

Beep Volume Level

Sets the level at which the volume for the Beep will be announced. When running TPControl, the device Hard Volume buttons will adjust the audible level of the Beep Volume Level.

Intercom call notification

When enabled, if TPControl is running but does not currently have application focus, an alert notification will be presented on the device.

NOTE: this notification occurs only if corresponding intercom call initiation commands are received by TPControl.

Passwords:

User passwords

There are up to 4 user passwords that can be used within a TP4 file for protected Page Flip actions, and a 5th for system protected Page Flip actions. Define each password in this section.

Version:

Version

This is the current software version of TPControl running on the device.

Token

This is the Token that the device is registered to.

Verify Device¹

This option provides the ability for the device to update TPControl licence information when changes have been applied at the Touch Panel Control servers, and is independent of TPTransfer. For example, in the case of "rolling licences", this option can be used to update and extend the licence period for the device.

When enabled, the function is performed once you select the "Back" option, and apply the changes by selecting "OK" (refer to "Applying the settings" for more information).

The option is reset back to *off* after changes have been applied, but can be re-enabled at any time to repeat the verification process.

If successful, a "Device successfully verified" message will be presented.

TPCloud update¹

This option provides the ability to update the TPControl **TP4** file and/or **Settings** via the internet, empowering an onsite technician or end-user to apply updates directly from the device.

Management of device Settings and TP4 file uploads is provided via your account login at www.touchpanelcontrol.com.

Simply, navigate to "[My Account > Tokens: TPControl licences \(TPCloud\)](#)" and any registered tokens will have access to **Upload** and **Settings** configuration options for the respective device.

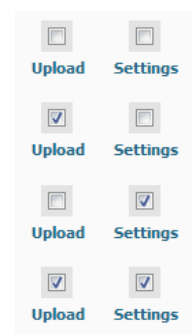
- Selecting the **Upload** link will present the Upload options
- Selecting the **Settings** link will present the Settings options

NOTE: The TP4 file and Settings represented may not represent those that are currently installed on the device.

Based on selection of the "Upload" and "Settings" **checkbox** options, the respective information stored by **TPCloud** will be applied to the device when the "TPCloud update" option is enabled on the device, and TPControl is launched.

For example, you can update;

- nothing (both the *Upload* and *Settings* checkboxes are not selected)
- only the TP4 file
- only the Settings
- both the TP4 file and the Settings



¹**NOTE:** In order for this to complete successfully, you will need to have internet access available from the device, and the device will need to have been previously registered.

Example **TPCloud update** management features are pictured below:

NOTE: TPCloud functionality via the website will be updated to provide Profile based 'Settings' support at a later date.

Legacy 'Local NI Master' and 'Remote NI Master' configurations will respectively apply to 'Profile 1' and 'Profile 2'.

Device Type	Token/Place Order	License Status Name	Created/Activated	Expires	UDID	Deauthorize *	Order ID	Last Update	TPCloud Settings (Remote Update)
----- Full Licenses -----									
	EDBOHRWQ	Full licence	10/02/2011 10/02/2011	never	35828001011	0/3 Deauthorize		16/08/2011	<input type="checkbox"/> Upload <input checked="" type="checkbox"/> Settings

File Name: battery.levels.TP4 File Size: 0.78 MB Uploaded at: 16/08/2011, 00:00:00 Latest download: Never [UPLOAD NEW TP4 FILE](#)

Local NI Master

Local Host:

Local Port:

Remote NI Master

Remote Host:

Remote Port:

Enable 3G:

Prompt for Local/Remote:

Device

Device ID:

Device Name:

Keep WiFi Active:

Multitasking Timeout:

Accessibility

Gestures:

Enable Auto-Lock:

Lock Rotation:

Dark screen startup:

Disable Multitouch:

Include buttons with no text:

Level Increment (%):

Project

Inactivity Page Flip Time:

Screen Resize:

Notification

Button Hit:

Button Miss:

Beep Volume Level(%):

Intercom call notification:

Passwords

Password 1:

Password 2:

Password 3:

Developer Settings

Developer Mode:

Transfer Port:

Restore All Settings:

TP4 file options:

[SAVE](#) [RESET](#)

Developer Mode

When enabled, this will allow TPControl to communicate with TPTransfer to receive TP4 files.

NOTE: When Developer mode is turned OFF, TPTransfer will not be able to communicate with TPControl.

Transfer Port

The port used by TPControl to communicate with TPTransfer. Default port is: 10700.

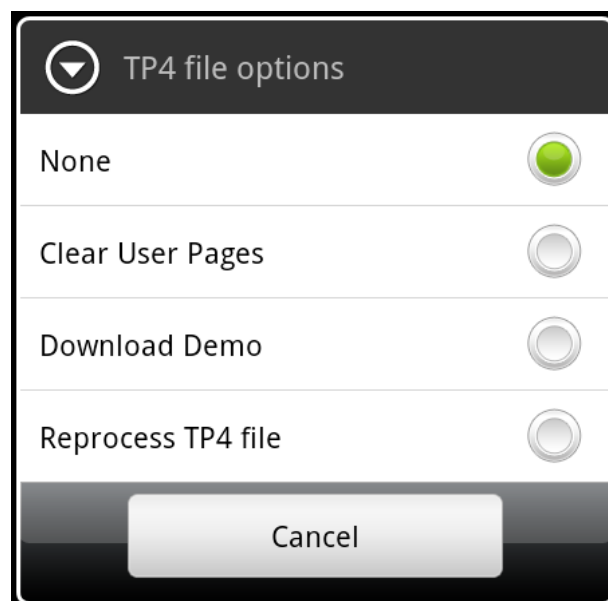
Restore All Settings

When Enabled, this will restore all settings on the settings page back to defaults. (Settings are applied when you exit using the *Back* button.)

TP4 file options

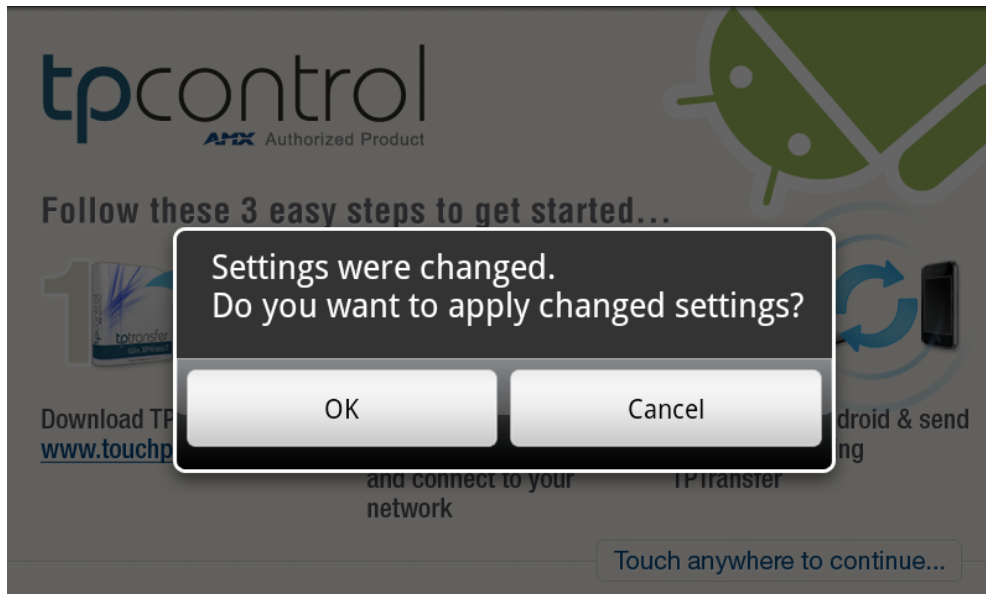
Operations specific to the TP4 file installed appear here, and are affected once you select the "Back" option from Settings.

- *None*
Do nothing
- *Clear User Pages*
When Enabled, the design file will be removed and the original Demo Pages will be loaded back onto the device.
- *Download Demo*
Downloads the most recent TP4 demonstration file from Touch Panel Control
- *Reprocess TP4 file*
Clears any caching, and reprocesses the installed TP4 file. This is the same process that runs whenever a file is transferred to the device.



Applying the Settings

Any changes to the settings will be applied when you exit Settings using the **Back** button. You will be prompted with the following:



- Answering "OK" will apply the changes immediately.
- Answering "Cancel" will not undo any changes made, but any changes will be applied the next time that TPControl is exited and run.

Problem Reporting

We aim to make your device integration as seamless as possible within your AMX environment. If you encounter any difficulties using the product or any of its features, please let us know and we will be happy to help you.

The helpdesk on our website at support.touchpanelcontrol.com operates from:

- Monday to Friday; 09:00 to 18:00 (GMT)
- Monday to Friday; 09:00 to 17:00 (AEST)

Touch Panel Control Team.

AMX, NetLinx, TPDesign4 are trademarks of AMX, LLC registered in the US and other countries.
Android is a trademark of Google Corporation registered in the US and other countries.

All other trademarks and copyrights are the property of their respective owners.