

TPControl and TPTransfer Setup Guide

by [Touch Panel Control](http://www.touchpanelcontrol.com)

The following is a guide to the installation and operation of the TPControl application for Android devices (by [Touch Panel Control](http://www.touchpanelcontrol.com)).

Overview

Our software solution comes in two parts: TPControl which is an application that runs on your portable device, and TPTransfer which is used to upload your AMX designs to a device with TPControl installed.

Once you have installed TPTransfer successfully on your computer, you will notice that your edition of AMX TPDesign4 will now contain additional panel types for TPControl specific devices. This will enable you to build a new panel design or convert existing designs for use on the device. *The TPTransfer application is then responsible for licensing of TPControl on your Android device and for the actual transfer of your TP4 design file to the TPControl enabled device.*

Current supported products include:

- Apple iPhone, iPad, and iPod Touch
- Android devices

TPControl is an application that can be installed on your Android device. This software enables the device to talk directly to an AMX NetLinX controller as if it were a native AMX touch panel and also facilitates communication with the TPTransfer software. Upon initial installation, a default panel file is installed to the device where you can preview functioning G4 controls much like on the AMX Modero series of touch panels. Customisation of designs is facilitated using AMX's TPDesign4 software. These can in turn be loaded onto your TPControl empowered device, which will communicate with an AMX NetLinX controller and operate seamlessly like any other native AMX system component.

Prerequisites

- Microsoft Windows XP/Vista/7
- AMX TPDesign4 must be installed and up to date
- Android device running v1.6 or later
NOTE: certain features are not available prior to Android v2.0, and multitouch functionality may vary between devices
- TPTransfer v1.1.2.0 or later, available from www.touchpanelcontrol.com
- To enable uploads to your device, either a Trial or Full Licence is required, available from www.touchpanelcontrol.com
- An internet connection is required at the time of licence validation (performed once for each device registration)
- A WiFi connection on your device for TPTransfer updates and to connect to your AMX NetLinX master

TPControl Device Settings

The "TPControl for Android - Device Settings" document is available for download from: www.touchpanelcontrol.com/catalog/product/download

Please refer to this document for configuration options and device specific settings for TPControl.

TPControl Command List

TPControl v2.0.0.0 introduced new commands and features that may not currently be available within AMX touch panels. Subsequent versions may introduce additional commands.

The "TPControl - Commands supported in addition to AMX commands" document is available for download from: www.touchpanelcontrol.com/catalog/product/download

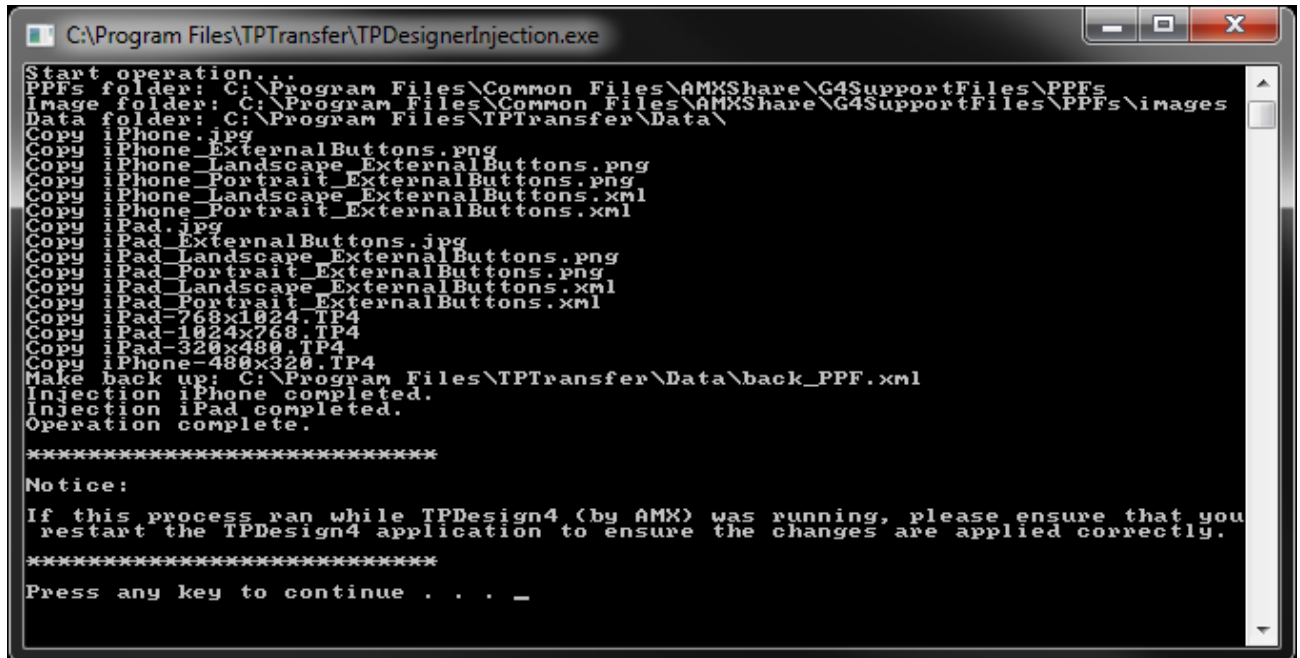
The document includes commands supported by TPControl, supplemental to those that are AMX device specific commands.

Installation

TPTransfer

1. Download TPTransfer v1.1.2.0 or later, from www.touchpanelcontrol.com.
2. Double click the executable to begin installation. This will install TPTransfer and enable specific TPCControl device support within TPDesign4.
3. On first execution the application will run a process to execute a patch process and copy files required for use in TPDesign4 (similar to the screenshot indicated below).

NOTE: If TPDesign4 was running during the installation, please close TPDesign4 and restart in order to use the updated options.



```
C:\Program Files\TPTransfer\TPDesignerInjection.exe
Start operation...
PPFs folder: C:\Program Files\Common Files\AMXShare\G4SupportFiles\PPFs
Image folder: C:\Program Files\Common Files\AMXShare\G4SupportFiles\PPFs\images
Data folder: C:\Program Files\TPTransfer\Data\
Copy iPhone.jpg
Copy iPhone_ExternalButtons.png
Copy iPhone_Landscape_ExternalButtons.png
Copy iPhone_Portrait_ExternalButtons.png
Copy iPhone_Landscape_ExternalButtons.xml
Copy iPhone_Portrait_ExternalButtons.xml
Copy iPad.jpg
Copy iPad_ExternalButtons.jpg
Copy iPad_Landscape_ExternalButtons.png
Copy iPad_Portrait_ExternalButtons.png
Copy iPad_Landscape_ExternalButtons.xml
Copy iPad_Portrait_ExternalButtons.xml
Copy iPad-768x1024.TP4
Copy iPad-1024x768.TP4
Copy iPad-320x480.TP4
Copy iPhone-480x320.TP4
Make back up: C:\Program Files\TPTransfer\Data\back_PPF.xml
Injection iPhone completed.
Injection iPad completed.
Operation complete.

*****
Notice:
If this process ran while TPDesign4 (by AMX) was running, please ensure that you
restart the TPDesign4 application to ensure the changes are applied correctly.
*****
Press any key to continue . . . _
```

NOTE: TPTransfer will only connect to your device if TPCControl is running.

TPControl

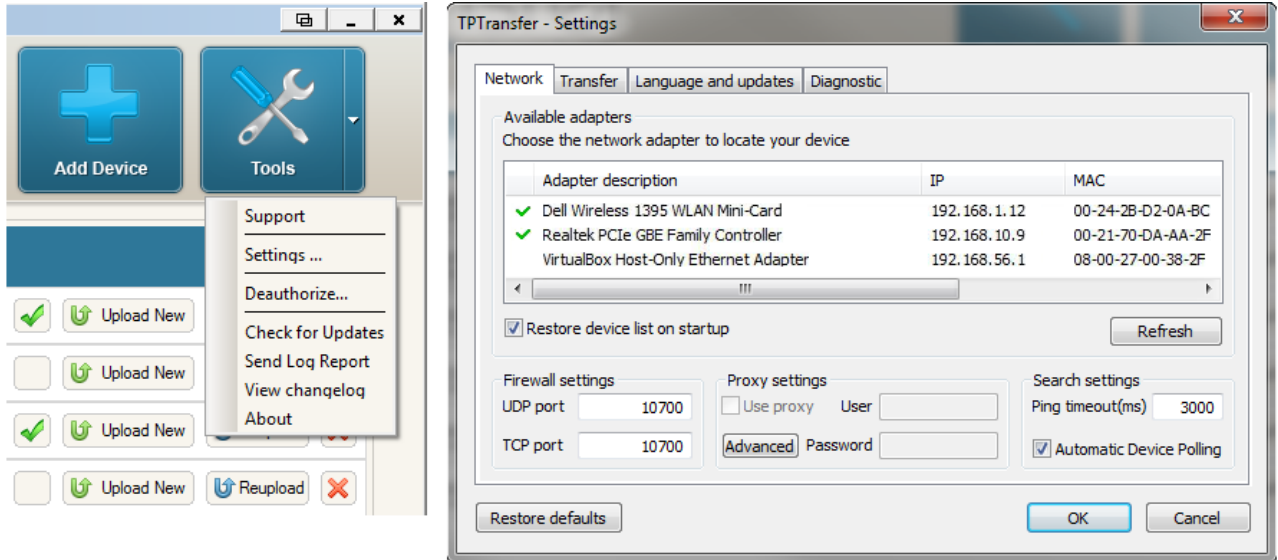
1. Download the "TPControl" application from the Android Market by clicking the link available from the downloads section of our website or by searching for "TPControl" within the Android Market application on your device.
2. When downloaded and installed, the **TPControl** icon will appear on your device. Tap to execute it.

NOTE: TPControl does **not** require a connection to an AMX NetLinx Master to communicate with TPTransfer.

Operation

Licensing

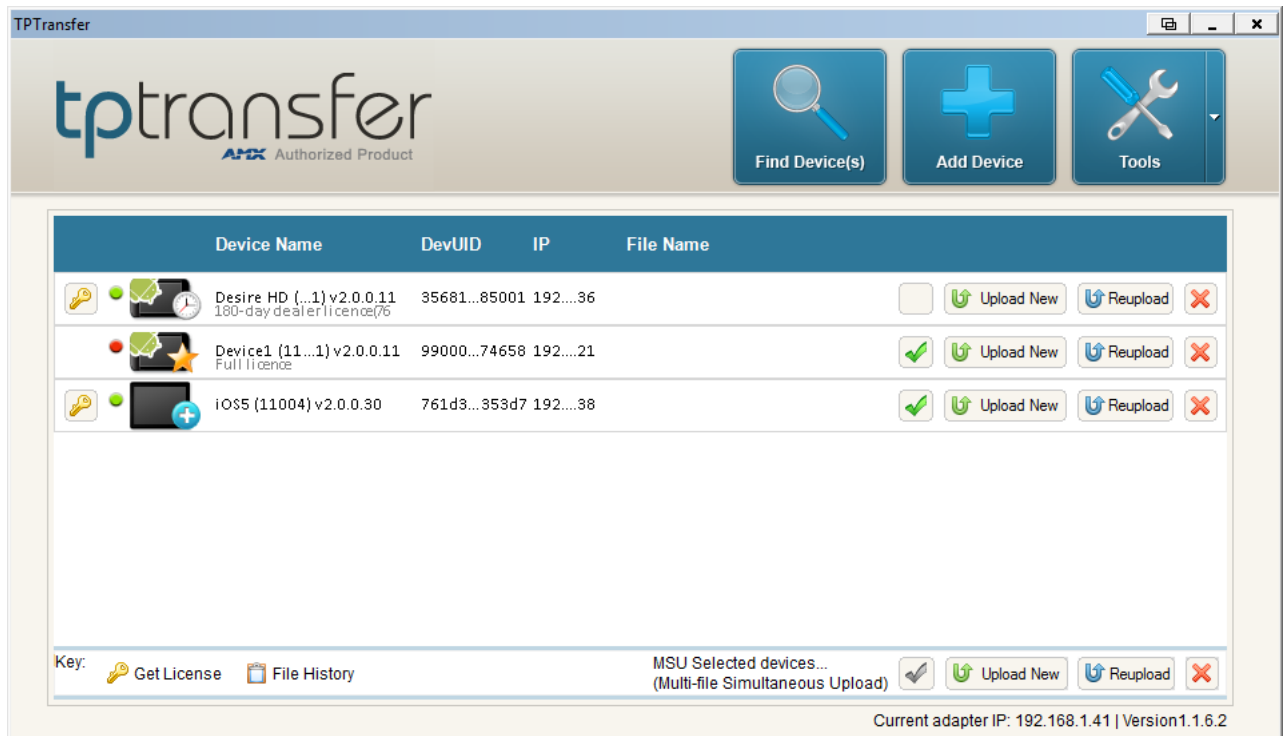
1. With TPTransfer running, from the initial loading page you will be presented with a screen providing three options. Firstly, select the "Tools" button and choose "Settings" from the drop-down list.
2. Ensure that the correct adapter has been selected in TPTransfer by choosing "Tools -> Settings -> Network". Multiple adapters can be selected at the same time.



NOTE: Your device must be configured to be connected to the same LAN and IP subnet as the TPTransfer computer.

3. Ensure that the Network adapter that you intend to use is selected and has a valid IP address that falls within the same subnet as your TPControl enabled device.
4. On your device, if you have not already, ensure that you have configured the devices Wi-Fi connection to be connected to the same LAN and IP subnet as the TPTransfer computer.
5. Start the TPControl application and wait for it to finish loading. The first load may take a moment or two as it prepares any default demonstration panel files.
6. If the "Auto Device Polling" option is enabled on the Network settings page in TPTransfer, then discovered TPControl devices will be listed automatically. Alternately, click the "Find Devices" button in TPTransfer to discover TPControl devices on your network.
You can also manually add a device by choosing the "Add Device" option, then specify the Host/IP address and Port (default 10700).
7. Initially your device will be listed including a blue icon embossed with a PLUS symbol, indicating it is not licenced. Click the "Get Licence" option against the device and TPTransfer will prompt for an email and token.
If you already have a valid token, skip to the next step. Otherwise, obtain your token from our website by clicking either "Try" or "Buy", and following the checkout process.
Ensure that you select the correct device type when requesting a licence
e.g. an Smartphone licence will not operate on a Tablet device.
8. Ensure that you have a valid connection to the internet and select the "Submit" option to successfully complete application registration. Then, select the "Close" option to close the registration page.

- If successful, the device icon will show a CLOCK indicating a Trial licence was applied, or a STAR indicating a Full licence was applied.

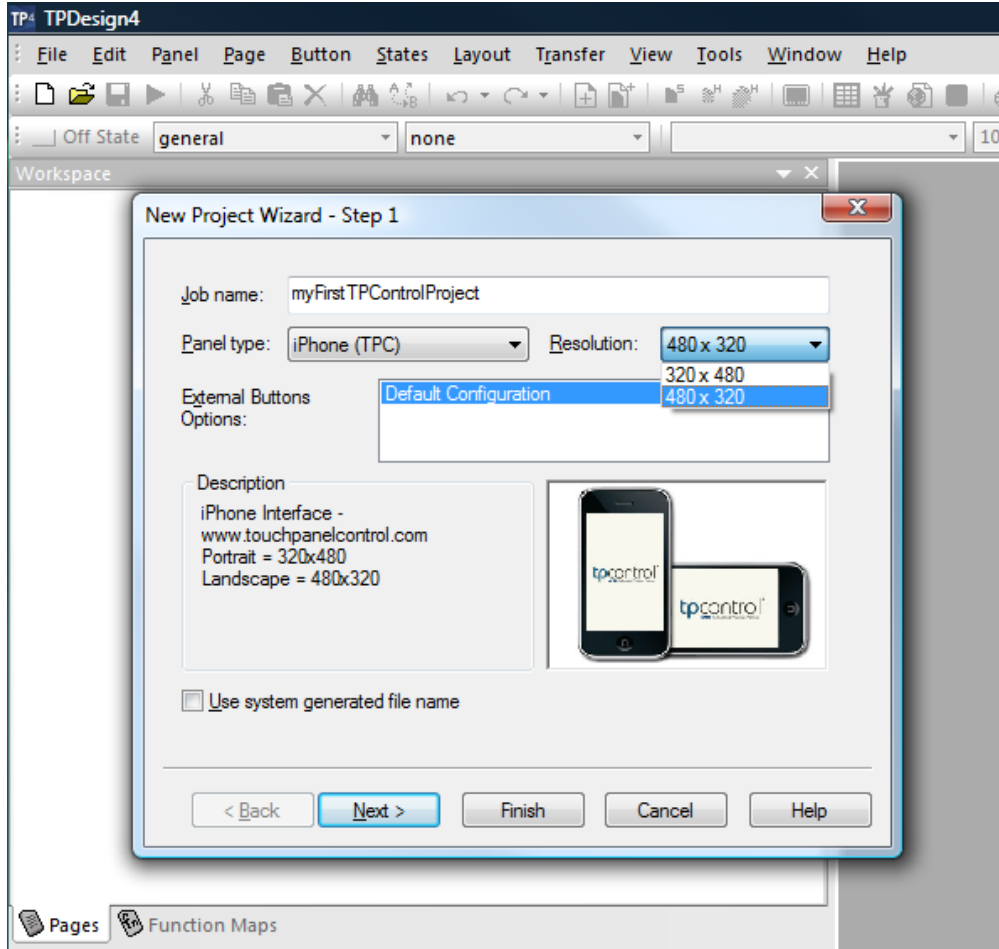


NOTE: When Developer mode is turned OFF in Settings, TPTransfer will not be able to communicate with TPControl. Ensure that Developer mode is turned ON.

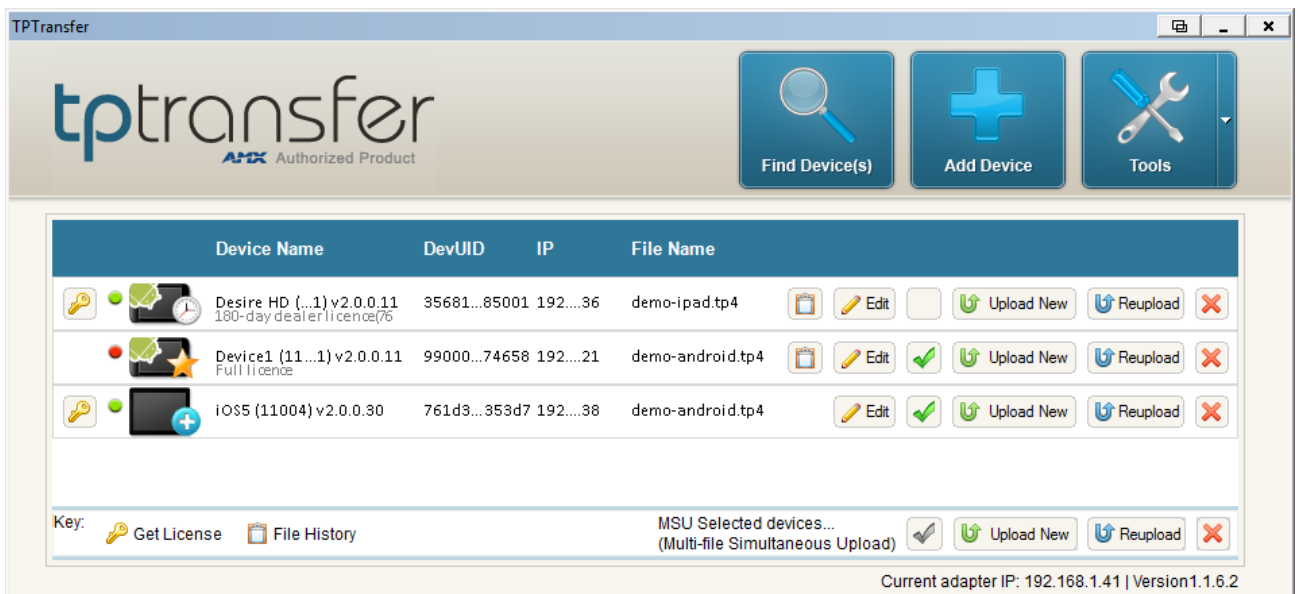
Refer to the device Settings for configuration options.

Creating and Sending a panel design

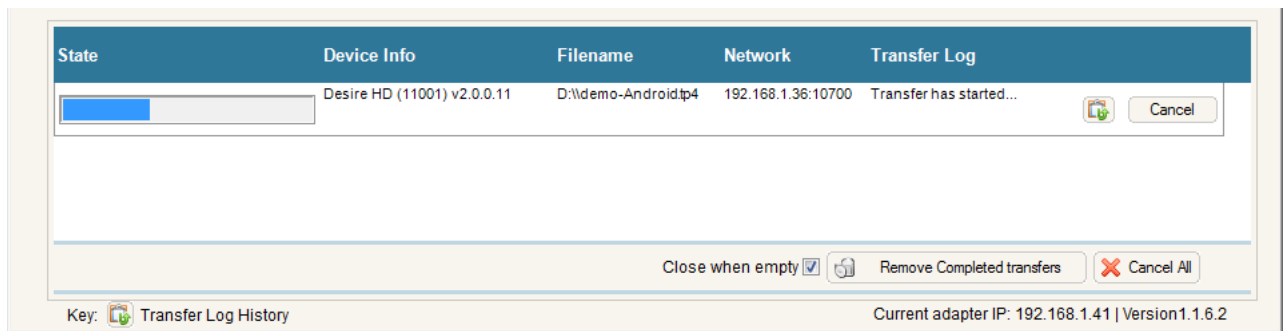
- Using TPDesign4 you can either create a new panel design from the included TPControl(TPC) panel types or you can load an existing design and choose "Save As Different Panel Type..." to convert to Android/iPhone/iPad.



- Once you have created a suitable TP4 file, close TPDesign4 or at least close the file you have open, and return to the TPTransfer application.
- Against the device you wish to upload to, click the "Upload New" option and select the TP4 file that you just created. Alternately, you may drag-n-drop the TP4 file directly onto the device in TPTransfer, or between listed devices, then select the "Reupload" option.



- The system will now attempt to connect to your device and transfer of the TP4 file will begin. Progress is shown both in TPTransfer and on the device itself.



- When the upload is completed, the device will process the file and then automatically load the new design. The first load of the design will take a few moments to complete while it pre-processes the design files (time taken depends on the size of the design). Subsequent restarts of TPControl will load much more quickly.
- You should then see your design has been loaded onto the device and is ready to use provided you have configured your NetLinx parameters within the device "Settings".

NOTE: To configure NetLinx connection parameters for Android devices, ensure TPControl is running, then select the **MENU** button on your device, followed by the **Settings** option.

NOTE: TPTransfer will only connect to your device if TPControl is running.

NOTE: TPControl does **not** require a connection to an AMX NetLinx Master to communicate with TPTransfer.

Known Issues

Devices

- The TPControl application has been developed and tested on a select range of Android devices. Over time, as the Android platform matures and our development continues, we expect that TPControl will be compatible across all relevant Android devices. Please review the [Android devices that have been classified for use with TPControl](#)

TPControl

- Certain Fonts may not appear correctly, particularly when non-standard indexing methods are embedded in the font file.
- We have endeavoured to support in TPControl the most commonly used AMX G3 and G4 commands used for control and manipulation of AMX touch panels. However, not all functions, nor all parameters for these commands may be supported. Please notify us through the helpdesk if we have overlooked one of your favourites.

TPDesign4/TPTransfer

- If you re-install AMX TPDesign4 or apply an update, you may lose the TPC template options found in the "TPDesign4 -> File -> New> Panel type" menu. To resolve this, run the TPTransfer XML patcher found in "TPTransfer -> Tools -> Settings -> Language and updates -> Patch TPDesign4" and then restart TPDesign4 to apply the changes.

Problem Reporting

We aim to make your device integration as seamless as possible within your AMX environment. If you encounter any difficulties using the product or any of its features, please let us know and we will be happy to help you.

The helpdesk on our website at support.touchpanelcontrol.com operates from:

- Monday to Friday; 09:00 to 18:00 (GMT)
- Monday to Friday; 09:00 to 17:00 (AEST)

Touch Panel Control Team.

AMX, NetLinX, TPDesign4 are trademarks of AMX, LLC registered in the US and other countries.

Android is a trademark of Google Corporation registered in the US and other countries.

Apple, iPod Touch, iPhone, iTunes and iPad are trademarks of Apple Inc. registered in the US and other countries.

Microsoft Windows XP, Windows Vista and Windows 7 are trademarks of Microsoft Corporation registered in the US and other countries.

All other trademarks and copyrights are the property of their respective owners.